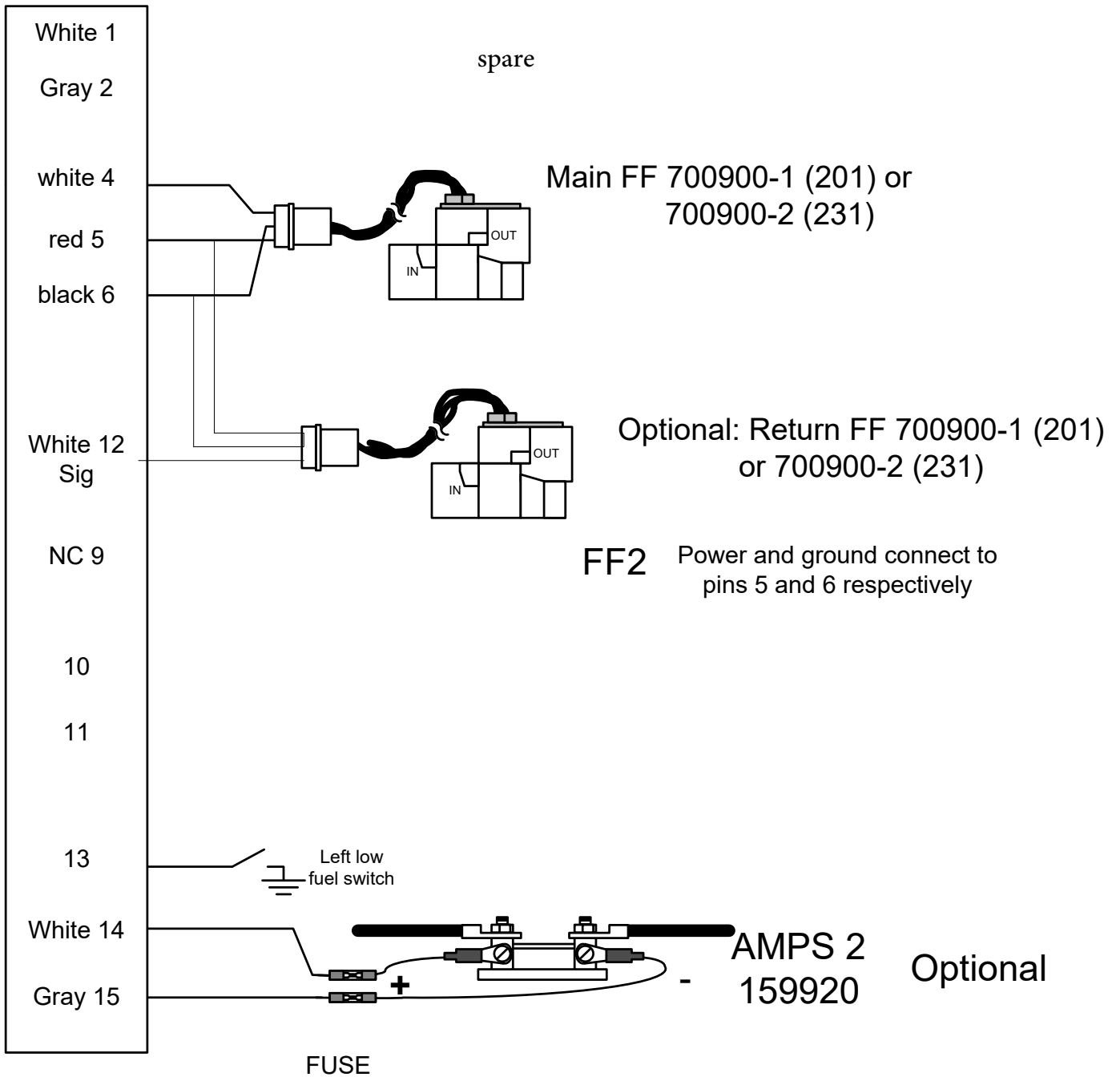
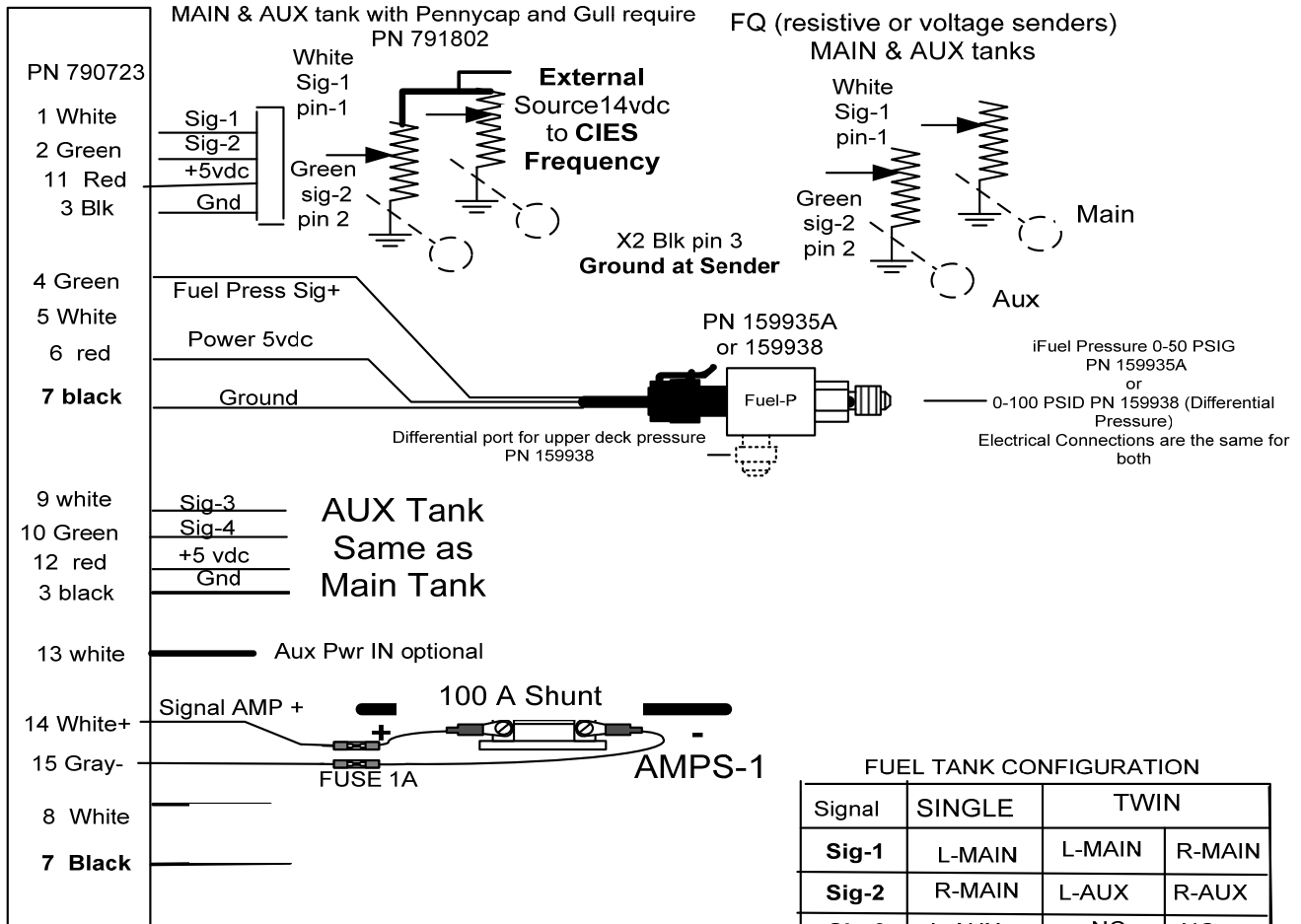


J4 (FF, AMP 2)



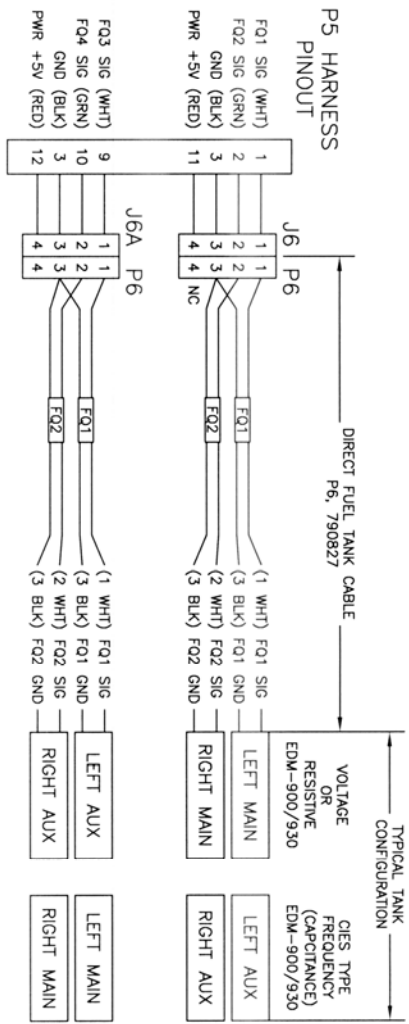
J5 PN 790723 (Tanks, Fuel Press, Amps) for one DAU



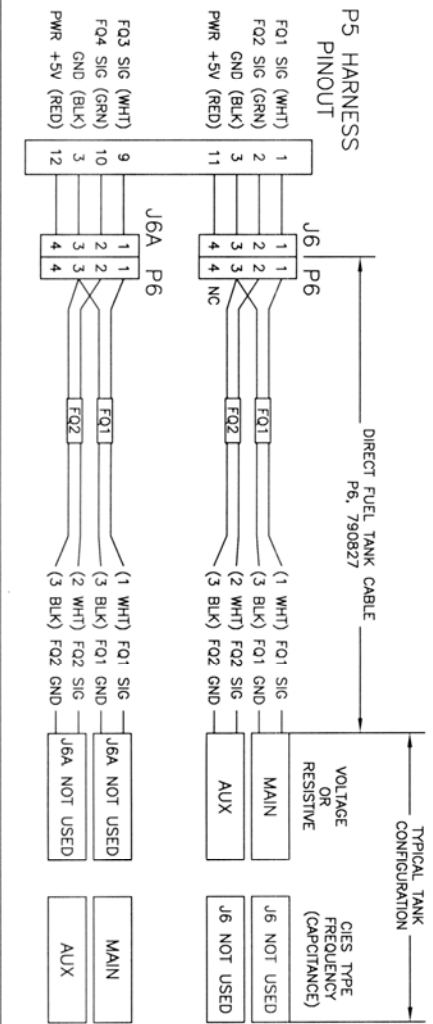
WIRING DIAGRAM, P6 HARNESS, 790827

FOR DIRECT TYPE FUEL QTY SENDERS
 (VOLTAGE 0-5 V, RESISTIVE 0-300 OHM, OR CIES FREQUENCY TYPE)

EDM-900/930, SINGLE ENGINE



EDM-950, TWIN ENGINE

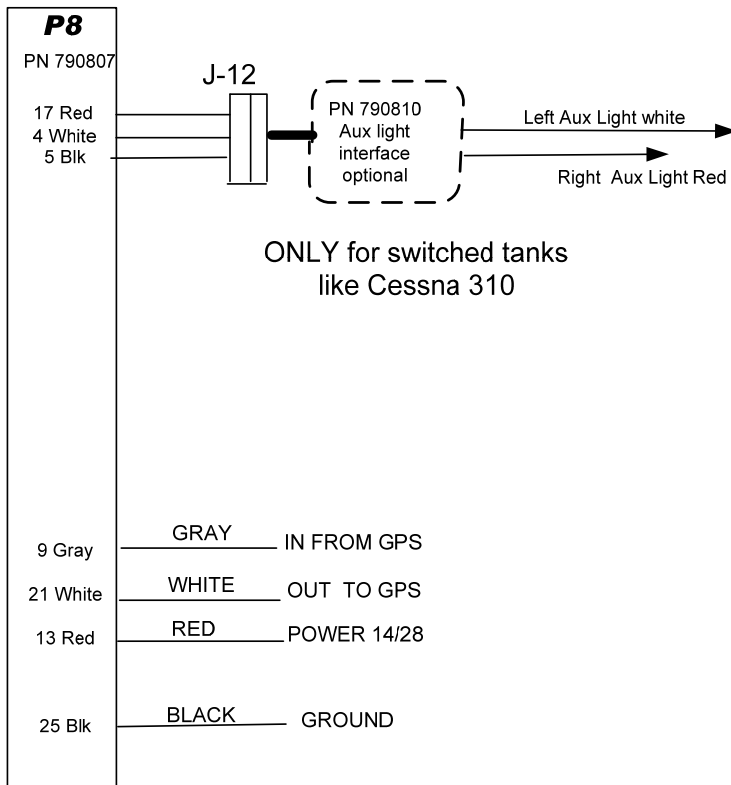


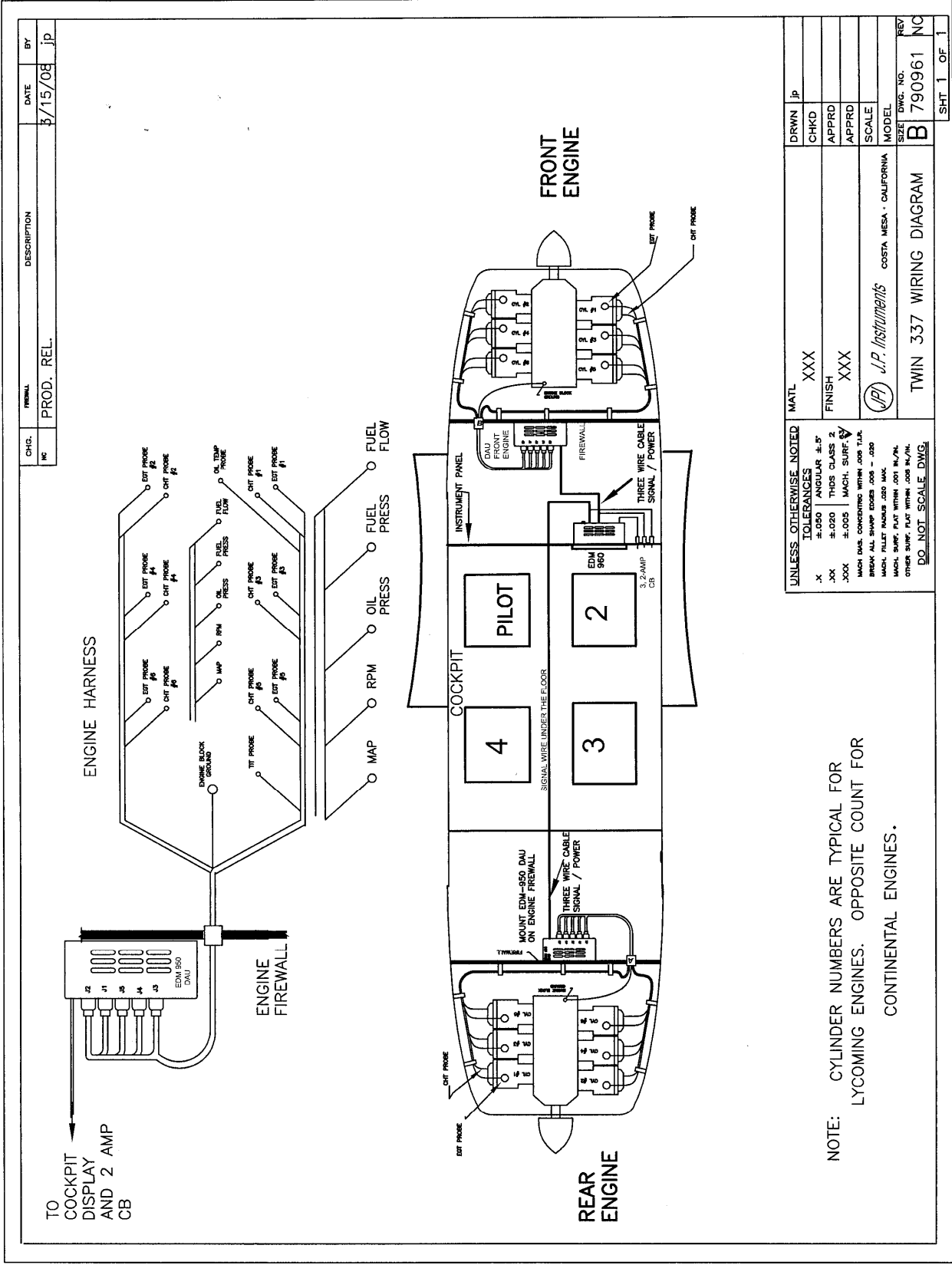
- NOTES UNLESS OTHERWISE SPECIFIED:
 1. FUEL SENDER GROUND WIRE ALONG WITH EDM GROUND WIRE MUST BE TERMINATED ON AIRFRAME GROUND AT SENDER.

REV	DESCRIPTION	DATE	BY
NC	PRODUCTION RELEASE	12/11	TS
A	ADDED CIES TYPE SENDERS AND EDM-950	02/16	LE

QTY	PART NO	DESCRIPTION	DRWN	TS	ITEM
-	-	-	-	-	-
<p>J.P. Instruments COSTA MESA, CALIFORNIA</p>					
MFL	-	-	CHKD	LE	-
APP	-	-	APP	-	-
TITLE: DIRECT TYPE FUEL QTY (0-5 VOLTS, 0-300 OHMS, OR CIES TYPE) SCALE: NONE MODEL: 900'S REV: 790837					
SHEET 1 OF 1					

41. P8 Harness Display PN 790807





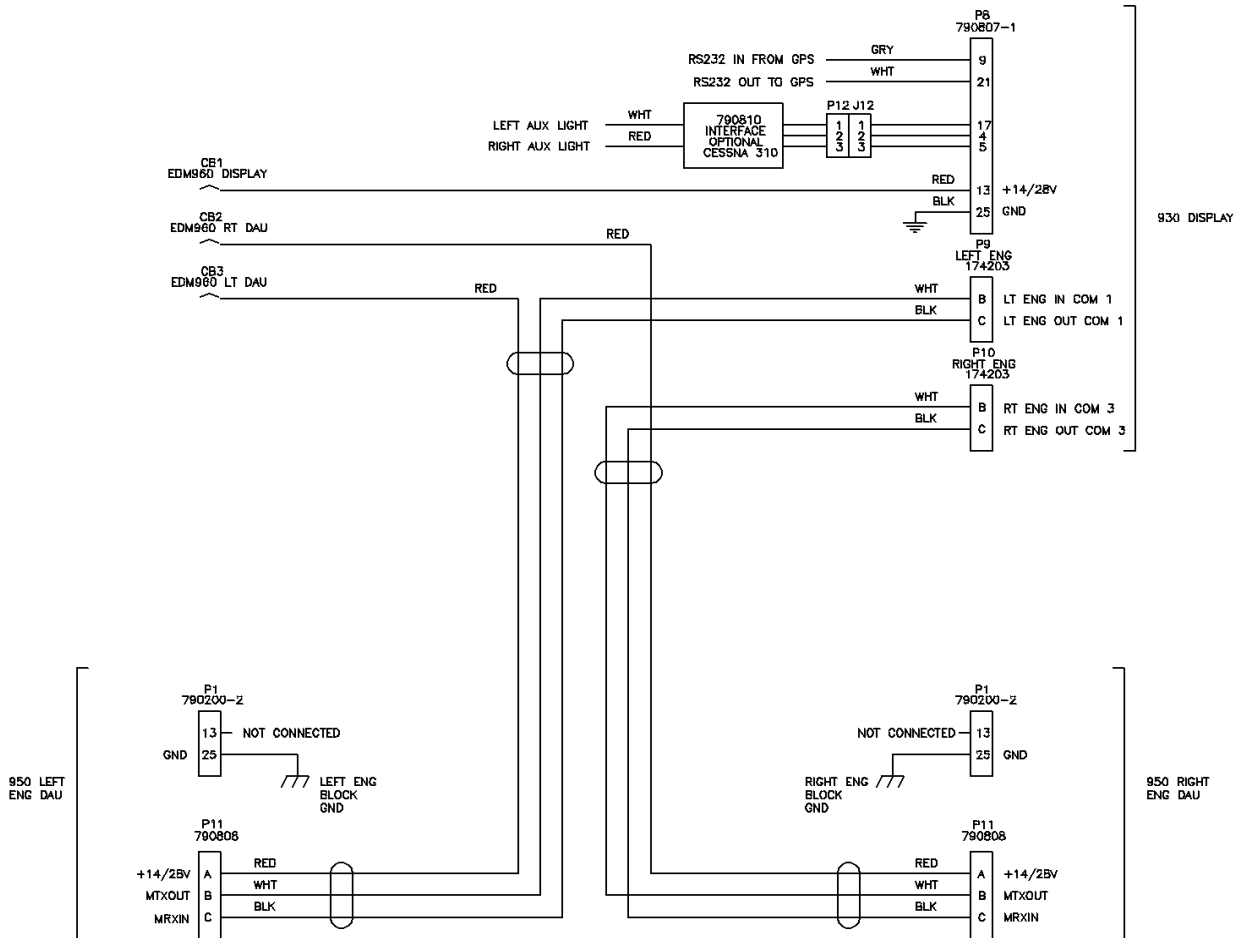
NOTE: CYLINDER NUMBERS ARE TYPICAL FOR LYCOMING ENGINES. OPPOSITE COUNT FOR CONTINENTAL ENGINES.

CHG. NO.	DESCRIPTION	DATE	BY
1	PROD. REL.	8/15/08	jp

UNLESS OTHERWISE NOTED	MATL	DRWN	jp
TOLERANCES	XXX	CHKD	
X ±.050 ANGULAR ±.5°		APPRD	
XX ±.020 THICK CLASS 2		APPRD	
.XX ±.005 1. MACH. SURF.		SCALE	
1 MACH. SURF. CONCERNING WITHIN .005 TYP.		MODEL	
BROK ALL SHARP EDGES .005 - .020	J.P. Instruments	SIZE	
MACH. SURF. FOUT WITHIN .001 IN./IN.	COSTA MESA - CALIFORNIA	DWG. NO.	B 790961
OTHER SURF. FOUT WITHIN .005 IN./IN.		REV	NC
DO NOT SCALE DWG.			
			SHT. 1 OF 1

42. Interconnection between Display, DAU's and GPS

The DAU's must be interfaced to the panel mounted Display. For certain aircraft the Display must be interfaced to the aircraft's fuel gauge system switches and signal conditioners.



Note: P11 is the pre-wired Canon plug on the harness. P9 and P10 are installer wired.

43. Instructions for Continued Airworthiness (ICA)

Refer to:

Supplement No: 960-01

Revision: A or later

Check the web page, jpinstruments.com for the latest revision to the ICA